

Impact of COVID-19

Effective and Efficient Employee Benefits Plan Design to Improve Sustainable Business Performance

APINDO WEBINAR
JULY 23RD, 2020

COVID-19 Pandemic makes life more challenging for you and your teams

How do I know if my **current insurance** give **enough protection...**

How do I prepare my employees when they come **back to work...**

How do I know if my **employees** are okay...

The situation keep changing. How do I keep myself **updated with the right information...**

I need to protect my benefit plan from **escalating costs**

Where can my employees **get tested...**

The new normal **stressed** my employees **out**.
How to help them?

What can I do to mitigate my employees' **health risks...**



Do my employees well protected by insurance?

Not all medical policies cover pandemic; Not all incurred cost paid by government



"I have group health insurance policy in place"



"I know for sure that my existing group health insurance covers pandemic"



"But government will pay all the cost, right?"



"We implement WFH; our employees are safe. They are young, it is less likely they will be hospitalized"

Does your existing policy cover pandemic?

27% insurers exclude pandemic in their Group Health Insurance policy wording!*

An allowance-basis insurance product can supplement it

- A benefit that pay a fixed amount agreed upon in advance, for example Hospital Cash Plan, can be a supplement to your existing policy.
- Regular group health insurance usually does not cover non-medical items

Private hospitals now also treating COVID19 patient

- Diagnosed with COVID-19 when you are abroad and you have to seek medical treatment there? Government won't pay.
- As number of cases rising up and health system stretched beyond its capacity, Ministry of Health instructed private hospitals to accept COVID-19 patients. Even if in the end government pay the cost, it is most likely that private hospitals will charge the cost to you first.

Self-Isolation at Home? Telehealth guards you 24/7

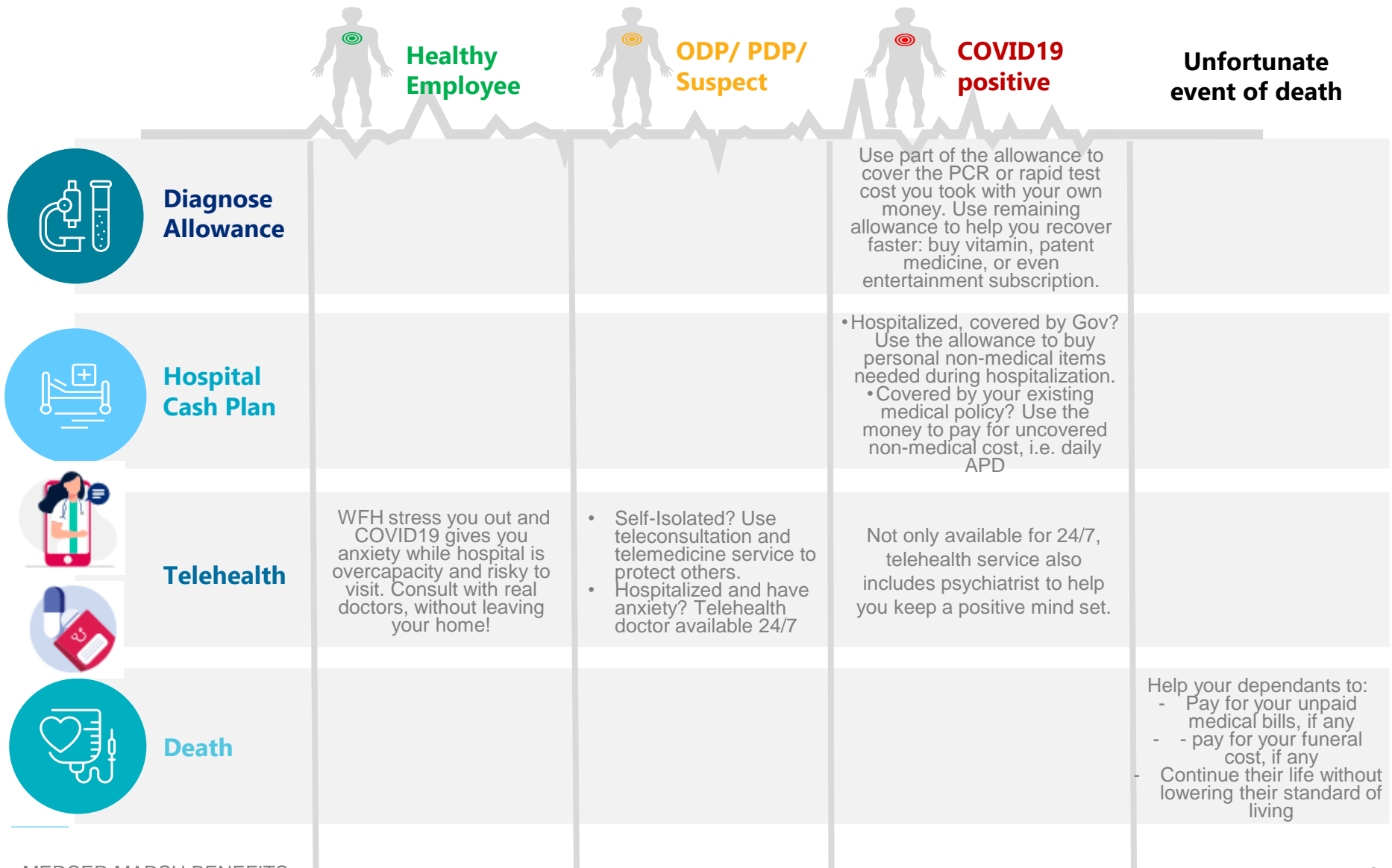
- This pandemic could be ongoing for 12+ months.** With situation develop rapidly in Indonesia, we can't be sure how long we can continue WFH.
- Either stay at home for WFH or self-isolation, telehealth is useful.

*In March, MMB surveyed 30 insurance partners who sell Group Health Insurance. 8 of them have pandemic in the Policy Exclusion section of their policy wording.

**Responding to COVID-19: Primer, Scenarios, and Implications by Oliver Wyman, 2020. Contact us if you want a copy of the report.

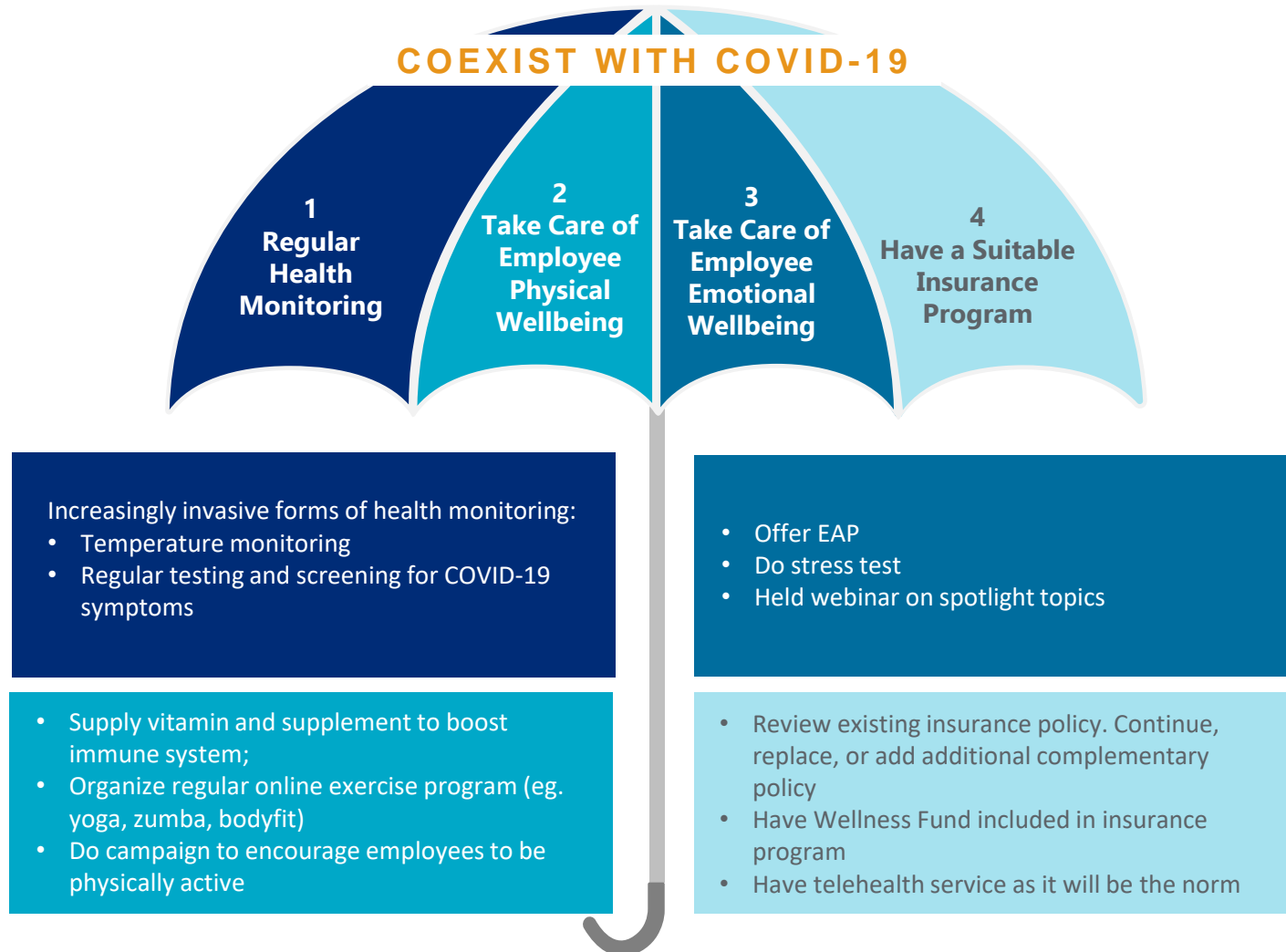
Some insurance benefits available in the market that supplement your existing group health insurance

Benefits that benefit your employees in every stages of COVID-19



Entering The New Normal

Realistic measures to be considered by employers for return to work



Responding to COVID-19 Pandemic: MMB practical solutions for our clients

MMB SOLUTIONS

Consulting Service



Regularly
disseminating FAQ



Held series of **Webinars**
on spotlight topics

Forecast Healthcare
Claims Impact using **BENEFIT MAP**



Design Employee Benefits
Plan that is holistic,
mitigates employers' cost,
and actually benefits
employees.



Review clients'
policy wording



Developed **COVID-19**
Specific Product: BEN19



Source Health supplies
for *new normal* protocol:
BEN19 ADVANCED

Insurance Product

Health and Wellbeing

BEN19: Insurance benefits that equip your employees fighting COVID-19



Diagnose Allowance



Telehealth & Telemedicine



Hospital Cash Plan



Compensation for Death

BEN19 ADVANCED



COVID-19 SCREENING
(Rapid and PCR)



VITAMINS
to boost
immune health



EMPLOYEE ASSISTANCE PROGRAM

WE ARE

**A Thought Leader
of Health and Benefits**

WE ARE

**A Trusted Partner
and Insurance Consultant**

WE ARE

**A Responsible Member of
Local Community**

Take a Glance at BenefitMAP Live Demonstration



BenefitMAP

Harnessing data and analytics to optimize employee benefit outcomes

With insights from **BenefitMAP**, you gain a holistic view of employee health and benefits risk that facilitates a real-time, dynamic conversation about your benefits budgeting options - so you can make strategic business decisions.

A forward
look



A customized
financial view



Optimal
decisions



BENCHMARKING



BENCHMARKING

Peer comparison

Demography, claim frequency and severity, utilization, loss ratio.

FORECASTING



PROBABILISTIC

Simulates a range of potential outcomes

Model impact of medical inflation affected by COVID-19, JKN / BPJS-K rate increase, budgetary decisions, demographic changes.

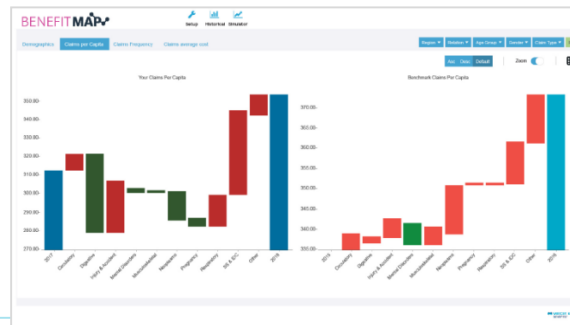
COST MITIGATION



PROBABILISTIC

Simulates a range of possible solutions to cost increases

Quantify impact of various plan design feature changes and implementing cost mitigation initiatives.



QUESTIONS?

Email us at

rafieq.ansyari@mercermarshbenefits.com

ria.ardiningtyas@mercermarshbenefits.com



Thank you
for joining
the webinar!



MERCER MARSH BENEFITS™

IMPORTANT NOTICE: This document does not constitute or form part of any offer or solicitation or invitation to sell by either Marsh or Mercer to provide any regulated services or products in any country in which either Marsh or Mercer has not been authorized or licensed to provide such regulated services or products. You accept this document on the understanding that it does not form the basis of any contract.

The availability, nature and provider of any services or products, as described herein, and applicable terms and conditions may therefore vary in certain countries as a result of applicable legal and regulatory restrictions and requirements. Please consult your Marsh or Mercer consultants regarding any restrictions that may be applicable to the ability of Marsh or Mercer to provide regulated services or products to you in your country.

© 2020 PT. Marsh Indonesia | 017-1984/APPARINDO/2016. All rights reserved.